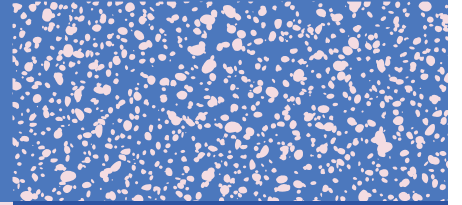
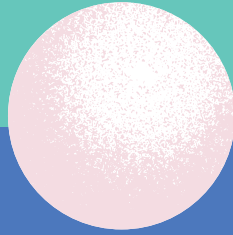
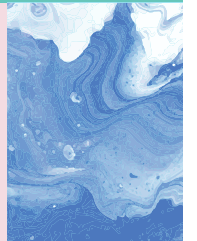


WHITEFRONTIER



**HOW SOON
IS NOW?**



DDH IPA



IN COLLAB' W/



COLLAB SERIES

8°C 

ALC. VOL. **8,2%**

33cl   20L

HOW SOON IS NOW

DOUBLE IPA



BREWED IN SWITZERLAND

STORE COLD ❄️ DRINK FRESH
UNFILTERED. UNPASTEURISED

DIPA brewed in collaboration with the insanely talented Wylam Brewery. Coming together to brew the largest hop bill we've used to date. This juicy & hazy DIPA is the first beer we've decided to put to cans, with a view to get the DIPA into your hands in the best condition possible.



Soft Pineapple, Ripe melon



Tropical fruits, Juicy melon



Citra, Ekuanot, El Dorado, Amarillo, Cryo Citra, Cryo Idaho 7



www.whitefrontier.ch



WhiteFrontier Brewery
Rue du Levant 99 - 1920 Martigny